



# Salish Sea Expeditions

Summer 2008

(206) 780-7848 • fax (206) 780-9005 • info@salish.org • www.salish.org

*Our mission is to inspire a passion for exploring, understanding and respecting the marine environment through hands-on scientific inquiry on Puget Sound.*

## Teachers Appreciate the Salish Learning Platform



*Meadowdale Middle School teacher Steve Howard and class enjoy a moment with Captain Ian*

Each season, Salish has the privilege to work with some of the finest teachers in the Puget Sound region (and beyond), as we collaborate in bringing hundreds of students out on the water for the shared adventure of a sailing research expedition. In addition to their careful pre-trip planning and insightful presence aboard the ship, our teachers provide that essential connection between Salish and the school system.

For some teachers, the Salish trip is their opportunity to complement their classroom curricula with hands-on, student-directed practice of the science they are teaching at school. A new teacher recently noted, "Before the trip we were studying ecology. Much of the vocab and bigger concepts they did in class were reinforced here and this experience will strengthen their understanding. The inquiry they did built on what we have done in the classroom and will help them succeed on the WASL. I think they developed a stronger appreciation for the Puget Sound and the great things it holds. They are excited to learn even more about it and to share this knowledge and excitement with others."

Teachers value that Salish offers a learning platform that supports a variety of learning styles and skill levels, especially for those students that struggle with traditional classroom academics. "Seeing Josh, an often hesitant and unsure kid, take charge and navigate the boat with ease and confidence was the most rewarding for me," said a teacher this past spring, who explained that he was one of the weaker students back at school. "This showed the true power of this experience in connecting with all students and learning types. It was neat for the kids to learn more, and show what they are capable of in a new, challenging context." Success involves teamwork, creativity in exploring new surroundings and independent problem-solving, whether analyzing the samples collected each day or raising and trimming the sails. Kinesthetic learners are just as vital to the group's progress as are the more analytical thinkers, and the science is accessible and fun for students of all levels. As observed by a teacher from one of our scholarship schools, "students with minimal academic rigor produce charts, graphs, theories and conclusions along with highly motivated students."

I AM ALWAYS IN AWE OF THE SALISH STAFF... BEING WITH THEM IS A HIGHLIGHT OF THE TRIP FOR ME.

The careful, scaffolded instruction of the Salish crew is an example for both students and teachers alike, allowing teachers to work alongside their students as peers rather than as mentors. "I am always in awe of the Salish staff - their energy, their ability to be positive with kids and their talents for directing kids' behavior in positive ways, their knowledge and teaching skills. Being with them is a highlight of the trip for me," said a long-time Salish teacher this spring. It is a rare opportunity for teachers

to observe other educators' teaching styles and their effectiveness with students, and some teachers are even able to weave elements of the Salish program back into their own classrooms after the trips. One teacher had her students create their very own "science motherboards" just like the one onboard, which helps focus and excite her students during their classroom science time. She writes, "I truly believe that our science classes are much more interesting and the kids are more engaged because of their Salish time."

To further the integration of our programs into the schools in upcoming seasons, Salish is excited to be developing new resources for teachers that will facilitate Salish-style inquiry-based field studies back in the schools' local watersheds following their expeditions. We look forward to working with our teachers to broaden their students' research in the greater Puget Sound ecosystem!

*Jenny McColloch, Education Director*



*Bainbridge High School science teacher Tom Armentrout discusses the group's data with one of his students*

### Inside...

Boats of the World	2	2007 Annual Report	Insert
The Shared Adventures of Orcas	3	Salish Staff: Inspiration in Action	5
Creature Feature: Sea Lemons!	4	Annual Dinner & Auction "Window on the Sound"	6-7

## A Letter from the Board: Boats of the World



*A Vietnamese fishing basket boat*

All around the world boats support life – providing jobs, bringing food, and expressing the cultural heritage of communities on shore.

In Vietnam round, lightweight basket-boats litter the beaches. Each morning fishermen return to the sea, roll their boats into the surf, pile in supplies and two or three men, and paddle out to the waiting fleet.

In Zanzibar, off the coast of Tanzania, traditional dhows are built from the hardwood limbs of local mangrove trees. Guided by the sun, and in darkness, the stars, their lateen sails carry fishermen, traders, and travelers along the African coast.

Students and teachers who participate in Salish programs join this universal and joyful boating tradition as they cut through the waves and waters of the Puget Sound.



*Zanzibar dhow navigating the waters of the African Coast*

On board *Carlyn*, our 61' research vessel, students are sailors. They learn to raise the sails, manage the sheets (lines), plot the course, and steer the boat. They plan the meals and take turns in the galley cooking for each other, retiring at day's end in their berths, rocked to sleep by tidal swell.

Students are also scientists. They ask questions, test limits, engage in learning by trial and error, and deploy equipment to undertake scientific experiments that they've devised. As individuals and as a team they work – gathering data, testing their hypotheses, and reporting on their findings.



*Salish Sea Expeditions' floating classroom Carlyn*

As I reflect on our 2008 spring season and look forward to the rapidly approaching fall expeditions, I applaud the talented and passionate Salish staff for helping students further develop their life skills – asking questions, gaining knowledge, and taking actions while understanding and facing the consequences.

I also applaud the students for their courage, hard work, and boundless enthusiasm, not to mention their willingness to happily brave the elements (remember how cold and rainy this spring was?). Truly inspirational!

What a glorious tradition to be part of – a local and global community of sailors – caring about our boats, our seas, and each other.

*Kimberly Corrigan, Board Member*

### Salish Ship Store



Salish is now offering a variety of great gear -- hats, t-shirts, mugs and more. Show your support for Salish's innovative programs AND look cool at the same time.

Visit our online store at Cafe Press by following our Ship Store link on the home page of our web site.

### Salish Sea Expeditions

647 Horizon View Pl. N.W.  
Bainbridge Island, WA 98110  
ph (206) 780-7848 fax (206) 780-9005  
www.salish.org info@salish.org

#### Staff

##### Executive Director

Stephen W. Streufert, M.S.  
stephen@salish.org

##### Education Director

Jenny McColloch, M.S.  
jenny@salish.org

##### Director of Outreach and Operations

Lorrie Kalmbach-Ehlers, B.S.  
lorrieke@salish.org

##### Business and Communication Director

Katy Mathias, M.P.P.M.  
katy@salish.org

##### Program Coordinator

Mollie Caka, B.S.  
mollie@salish.org

##### Administrative Assistant

Karen Withers  
admin@salish.org

#### Board Members

Laurie Bauman Arnold, B.A.  
Children's Media Writer

CDR Thomas Callahan, (ret) M.M.A.  
Waypoint Environmental Council

Kimberly E. Corrigan, M.A.  
Freelance Writer

Roger Coulter, M.P.P.M.  
Unitus

Erickson DeOliveira, M.B.A.  
Amazon.com

Ken Fabert, M.D.  
Group Health Cooperative

Bruce Gryniowski  
Gallatin Public Affairs

Eric Laschever, J.D.  
Stoel Rives LLP

Tom Mueller, B.S.  
Sequana Environmental

Terese Richmond, J.D.  
GordonDerr LLP

John Sheppard, M.B.A.  
REI Adventures & Outdoor School

Scott R. Vokey, J.D.  
Weyerhaeuser Real Estate Company

Katherine F. Wellman, Ph.D.  
Northern Economics, Inc.

## The Shared Adventures of Orcas

The 7:05 a.m. ferry from Bainbridge Island to Seattle is bustling with commuters heading into Seattle. Nearly every seat is full, occupied by commuters with the daily paper and coffee in hand, yakking on cell phones, or connecting with fellow commuters.

The norm of the commute changed dramatically one morning with just a few words from the ship's captain, "Orcas off the port bow!" After the back and forth scrambles of commuters seeking to recall just which side was "port," we jammed against the windows, seeking to gain a glimpse, and causing an almost perceptible list of the vessel. For a moment, the commute turned into a silent vigil, broken only by the lone voice's shout, "There they are!"

In hushed tones, neighbor helped neighbor, from ferry seat to ferry seat, pointing and tracking the nearby whales. The totem creatures rose rhythmically from the waters just a few hundred feet away, passing us as they swam to the west, and the entire vessel sat in silence for those few memorable moments.

That was six months ago, and I continue to reflect on the special moments of that morning and how they relate to the experiences our region's youth have with Salish Sea Expeditions aboard the sailing research vessel *Carlyn*.

First, I was amazed at how quiet the ferry had become. Surely we all knew better than to believe that we needed to be quiet lest we scare the orcas away. It was something stronger and more profound, the hush that comes with reverence and beauty and the sacred, not unlike what happens upon entering a cathedral or a cemetery, or while in the presence of a great piece of art. As a people, in a shared experience, we still have a capacity to be commonly moved. In that moment, collective awe clearly trumped the sports page and emails on the Blackberry.

We see that same reaction in our students. For our participants, it is rare to see the Sound's charismatic megafauna like orcas or other whales, yet over the course of 3-5 day expeditions, even the most subtle experience can have the same effect. Amazement over diversity and abundance of plankton, complexities of the food web or lifecycles, and discoveries of starfish and sea lemons in tidepools can fuel similar reactions. The majesty of the Sound – at the macro or micro level – commands our respect and reverence, and we each have the ability to discover and re-discover it.

A second memory from that morning came after the orcas disappeared from view. Those of us crammed into that ferry booth didn't just go back to our routine; instead, we entered into a new state of camaraderie, sharing about family, and nature, and the specialness of what we witnessed. One man said "I won't forget this day for a long time. I can't wait to tell my kid!" As we talked, my ears picked up not just our conversation, but the conversations of many; the vessel was filled with people wanting to verbalize this meaningful experience.

Powerful connections with the natural world help strengthen our connections with one another. The right circumstances during five minutes of a short ferry ride made for a powerful experience for the several thousand aboard that boat that day. Similarly, the shared adventure of a research expedition builds powerful relationships, and our students develop ties that extend well-beyond the decks of the ship.

This spring, two groups from two disparate schools – one a private school on Bainbridge Island, the other a public school from rural Washington – came together for a three day research expedition. Though none of them knew each other prior to their Salish trip, their shared experience of discovery has created a powerful bond. They now correspond as pen pals, and one group traveled to see the others' school play.

Common to all Salish expeditions is the excitement of learning and discovery shared by the young scientists and sailors. These focused 3-5 day experiences not only spark learning momentum in the students, but also fuel us as an organization.

*"No single pedagogical approach is right for all kids, particularly when it comes to science education. Salish stands out from similar programs by focusing on empowering the students and by building on many different learning styles simultaneously."*

*- Salish Educator*



*An Orca surfaces near a ferry in the waters of the Puget Sound*

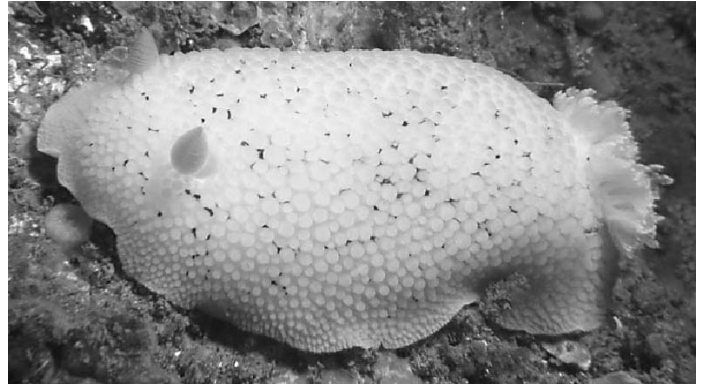
I recently read a study that examined Nobel Prize winners in the hard sciences – 75% of these scientists credited an out-of-class experience as the thing that inspired their passion for science and discovery. I believe that we see the same spark in some of the 600 students that we serve annually, and can only imagine how these experiences will motivate and launch them into future learning. As an organization, our dream can be found in witnessing our students as they realize their own.

*Stephen Streufert, Executive Director*

## Creature Feature: Sea Lemons!

While there may be a commonly held belief that Sea Lemons are used to prevent scurvy at sea, they are actually a lovely Nudibranch found occasionally here in the Puget Sound by some of our own lucky student-scientists.

Nudibranchs (literally “naked gill” in Latin) are Gastropod Mollusks commonly known as Sea Slugs that number more than 3000 species world-wide. Though generally very small, they are among the most colorful and flamboyant characters in the sea and have developed an array of interesting adaptations to ward off predators, considering they are soft, slow-moving, bite-sized fleshy nuggets. As in much of nature, their brilliant coloring is used to warn predators of lurking dangers. Some species hijack assistance from their food—incorporating toxins into their bodies that are harmless to them, but distasteful or poisonous to predators. Others have found a way to ingest the stinging cells (nematocysts) from sea anemones and corals and move them to their skin to be used on would-be attackers. Some have thick leathery skin or impressive camouflage.



*The fantastic Sea Lemon*

All individuals are hermaphroditic. The anatomy of a Nudibranch includes exposed gills on the animals dorsal side; two feathery, horn-like sensory appendages called rhinophores, used to smell; and antennae-like tentacles used for feeling and tasting their surroundings—making up for their poor eyesight.



*A Mt. Baker Middle School student proudly displays a Sea Lemon found in a tide pool on Jones Island in the San Juans*

Sea Lemons are dorid Nudibranchs, and don't have the fleshy dangles (digestive organs called cerata) that their cousins the aeolids have. They are aptly named, as they look curiously like a lemon in size, shape, and color, with the addition of a circular plume of gills around their anus and their rhinophores. There are two species in the Puget Sound: *Archidoris montereyensis* and *Anisodoris lentiginosa*. Sea Lemons are sponge eaters, and are often found on docks, pilings, and lucky low-tide shores. When plucked from their perches by our intrepid students or similarly threatened, they can retract their gills and rhinophores. The patient observer can wait for the pretty bits to re-emerge and the result is a beautiful (and a bit silly-looking) creature!

On Salish trips, some of the most valuable teaching moments occur when students choose to plant themselves belly down on a dock, poking over the sides, or explore the beach, turning over rocks in search of new creatures. The thrill of these personal discoveries, and the genuine interest, awe, and amazement that arise from learning more about our undersea critters create lasting memories for our students. It's thrilling for our staff when students curiosity is rewarded and they realize that science is just about the coolest thing since a Sea Lemon!

### How to Donate

#### It is easy to donate to Salish!

Send a check, made out to Salish Sea Expeditions, in the enclosed donation envelope.

**Donate by credit card online at our web site [www.salish.org](http://www.salish.org), and select the donate tab.**

Consider supporting Salish through many **planned giving opportunities.**

Please contact the office for further details.

Bainbridge Island residents can donate through **One Call for All.**

**And please don't forget to see if your company will match your donation!**



*A sample of the Mt. Baker students' nature sketches after careful observation of the tide pools' abundant sea life. The Sea Lemon at left is depicted in the center as "Sea Slug"*



# Salish Sea Expeditions' 2007 Annual Report

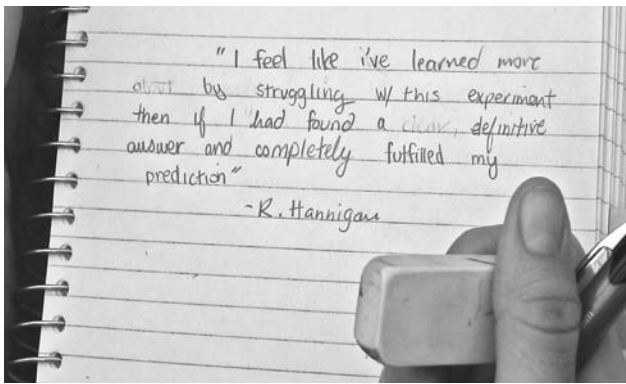
## The Beginning of Another Decade of Discovery

*A ship in harbor is safe -- but that is not what ships are built for.*

*-John A. Shedd, Salt from My Attic, 1928*

In the spring of 1997, the newly built sailing research vessel *Carlyn* splashed into the waters of Puget Sound ready to embark on the start of an adventure with Salish Sea Expeditions. At the start of *Carlyn's* career as a research vessel, she sailed from the safety of the harbor into the unknowns of research and adventure with the first class of students on a voyage of learning and discovery. At the same time, as an organization, Salish left the comfort of "that would be a cool program" to the challenges faced by a start-up nonprofit.

We were well prepared – two preparatory years of talking to teachers and studying educational theories led to the formation of our core program strategy that has remained remarkably consistent. A program based on a student-driven decision model, combined with hands-on, real-world experience, has created a powerful learning opportunity that has only gotten stronger over the last ten years.



*An over the shoulder peek at a student's reflection on her team's inability to draw a firm conclusion about their scientific prediction*

Looking back, we developed strong organizational momentum in our growth from a great idea, to a small start-up nonprofit, to now a recognized regional leader in student-led, inquiry-based programming. Our expeditions have logged over 8,000 nautical miles, as nearly 4,500 students have gathered data from over 1,200 data stations across Puget Sound. We are now on our fifth complete set of foul weather gear, though we've decided to forgo the calculation of the cups of hot cocoa consumed.

Demand for our programs by regional science teachers continues to be strong; we push the limits of scheduling, staff and weather to enable longer student expeditions while maximizing the number of students we serve. Three to five day programs run virtually every day from mid-March through mid-June, and again from the first days of the school year until mid-October. Until a second vessel is on the Puget Sound with Salish staff and students aboard, we don't anticipate future growth.

We are uniquely situated for another decade of discovery. The Governor's efforts to challenge the current trajectory of the health of Puget Sound, critical examination of the region's school science education efforts and renewed calls to ensure that "no child is left inside" fuel our passion for getting the youth of Puget Sound out on the water, excited about science and committed as stewards.

Consistent in these ten years of expeditions has been the quality of our programs. Our reputation enables us to recruit an incredible cadre of dedicated educators, committed to quality and creative programming and ensuring that each student receives opportunities best suited to his or her strengths, whether science, navigation, sailing or cooking. Under their guidance, students who have never shone in an academic setting suddenly blossom into leaders. Each season marks the return of several veteran educators as well as talented newcomers who bring new ideas and innovations to our constantly improving program. Also consistent has been the strong support of our Board of Directors, area foundations, Camp Four Winds\*Westward Ho! and an ever growing base of individual donors.

We are extremely grateful for the strong support of our community; surely, it generates the wave of enthusiasm on which we will sail on into the next decade of programs.



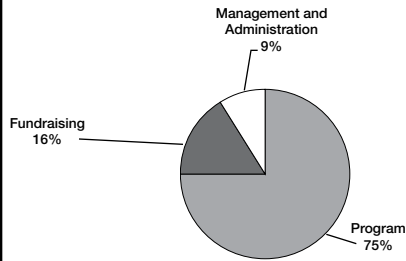
*Salish Educator Doug Krause watches as Journeys School students chart a course through the waters of the San Juans*



# Salish Sea Expeditions' 2007 Annual Report

## The Beginning of Another Decade of Discovery

### 2007 Expenses



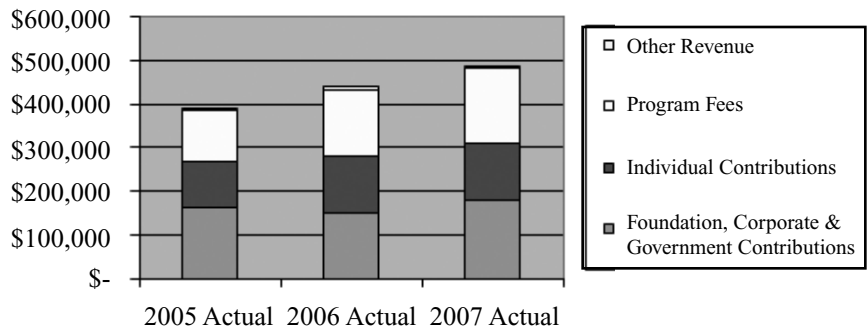
2007 was a solid financial year for Salish. The organization showed strong revenue performance, with revenue growth of 11% over 2006 and particular strength in program fees and Foundation, Corporate and Government support. Continued fiscal discipline ensured that Salish finished the year exceptionally close to budget.

In 2007, the organization reported negative net income of approximately \$1600, reflecting the organization's investment of cash reserves in program improvements and exploring second vessel options. The small operating deficit is approximately 0.3% of this year's revenue, and is smaller than the budgeted operating deficit. In 2007 we continued to meet, in every month, our goal of maintaining a cash reserve equal to the next two months of operating expenses.

In 2007, we reached maximum capacity for our research vessel, given availability and weather constraints. Hence we expect program revenue to level off in the short term. While we might explore modest fee increases, we are committed to keeping our programs affordable for low-income and public schools, the latter of which represents 75% of our participants. Instead, to meet the increasing demand for our programs, we are exploring increases to capacity through a second research vessel.

Salish continues to run a lean organization, with 75% of overall expenses going directly to programs.

### Sources of Revenue, 2005-2007



**We thank the following individuals for their generous contributions received between 01/01/07 and 12/31/07 inclusive of gifts of cash, stock, products and services.**

#### \$5,000+ North Star

Roger Coulter and Katy Mathias  
Jonathan and Leila Linen  
Laurie and Stephen Arnold

#### \$2,500 - \$4,999 Tsunami

Sophy Johnston  
Gaynelle and Jay Derr  
Irv and Bonnie Alpert  
Thomas and Heidi Mueller  
*In memory of Olive Kirby*  
Trina Wellman and Douglas Wells

#### \$1000 - \$2,499 Tide

Anonymous  
Tom Alberg and Judi Beck  
Thomas and Mary Ann Callahan  
Woods and Izumi Fairbanks  
James Johnston

#### \$1000 - \$2,499 Tide cont.

Eric Laschever and Eulalie Sullivan  
May Leong and Rory Lysaght  
Brent and Sallie Lumley  
Geraldine Martin  
John and Susan Mathias  
John and Brookie McColloch  
Leigh Noffsinger and Ken Dole  
Ann Reis  
T.C. and Keith Richmond  
William and Jill Ruckelshaus  
Ron and Eva-Maria Sher  
Katherine Stuart and David Overton  
Sean Vanderdasson  
Scott and Marion Vokey  
Rebecca and Bill Wellington  
Bruce Williams and Gro Buer

#### \$500 - \$999 Breaker

Rachel Bergman and Neil Norcross  
Patrick Berkley and Deirdre Doyle  
Kim Corrigan  
Robert and Page Coulter  
Patrick and Kellie Elliott  
George Ford and Eleanor Johnston Ford  
Carol Furry and Ron Kessler  
Finn Garaas and Beckie Garaas  
Don Kotts  
Jim and Nancy Lewis  
Ellie Linen Low and Dave Low, Jr.  
Dennis McLerran and Karin Nyrop  
Doug and Karrey Rigby  
Donald and Brenda Sotta  
Steve Tan  
Ben and Coco Wellington  
*In honor of Rebecca Wellington*  
Ross Yeager



# Salish Sea Expeditions' 2007 Annual Report

## The Beginning of Another Decade of Discovery

### \$250 - \$499 Crest

David and Margaret Amory  
 Chandra Bornstein  
 Dave and Betsy Chappelle  
 Charles Eriksen and Alden Garrett  
 Daniel Flanagan  
 Ace and Alice Forsythe  
 Sandi and John Hempelmann  
 Marc and Carol Hershman  
 Kit Hitchcock  
 Colin and Jean Jones  
 Robert and Diane Kalmbach  
 Daniel and Holly Levin  
 Miguel and Gabriela Llanos  
*In honor of Nelly and Jim Kilroy*  
 Bill and Julie Marler  
 Alan Merkle  
 Malcolm and Annette Mitchell  
 Glenn Morrissey  
 Tony and Ann Peacock  
 Eric Rehm and Maria Cook  
 Scott Schaffer  
 John Sheppard  
 Tres and Robert Small  
 Michael and Bernadette Stephen-Mcrae  
 Stephen Streufert and Lisa Foisy  
 Brian Thysell  
 Joe Wallace  
 Matt and Marianne Wells  
 Warren and Clarissa Wooster  
 JoAnne Yoshimoto

### \$100 - \$249 Swell

Anonymous  
*In honor of Jenny McColloch*  
 Jeffrey and Christine Arnold  
 Basia Belza  
 David Berkman  
*In honor of Stephen Streufert*  
 Edward Berschinski and Debra DeVlieger  
 Christopher Brookfield and Michele Koppes  
 Frank Buxton and Cynthia Sears  
 Michael Caryl  
 Arthur Christensen  
 Susan Clark  
 Andrea Copping  
 Barbara Corrigan  
 Maria Coryell-Martin  
 Chris and Leslie David  
 Betsy Davis  
 Erick and Kelly DeOliveira  
 Sonia Doughty  
 Elizabeth Dunham  
 Bruce Fabert and Sharon Brodniak  
 Mary Fairhurst  
 Paul Fletcher and Sue Donaldson  
 Donald Foisy and Marla Brandt  
 Dan and Patricia Fowler  
 Kristin France  
 Leah Gardner and Robert Williamson  
 Jim and Lona Gartrell  
 Dan Grausz and Clare Meeker  
 John Holt and Susan Trainor Holt  
 Gretchen Hund and Edward Andrews  
 Lorrie Kalmbach-Ehlers and R.J. Ehlers  
 Susan Kanvik and Steven Austin

### \$100 - \$249 Swell cont.

Kathryn Karcher and Jeffrey Harmes  
 Peter and Mary Kerr  
 Chris and Rebecca King  
 Karl and Nandy Kruger  
 Pat Larson  
*In memory of Owen Simmerer*  
 Frank and Molly Lawrence  
 Debra Levin  
 Chris Linnett and Cinni Fischer  
 David and Candy Low  
 Chris and Christine MacKay  
 Frank and Barbara Magusin  
 Stan and Beverley Martin  
 Alan and Shiji Mattamana  
 Janne Matter  
 Scott and Leslie McCoubrey  
 Jim and Katie McGillivray  
 Rodney McKenzie  
 Michael and Nicki McMahan  
 Alan and Bonnie Mearns  
 Tim Meekins  
 Lori Midthun and Stuart Mitchell  
 Katherine Murphy  
 Jonathan Mutlow  
 Peter and Joy Namtvedt Best  
 Robert Nelsen and Ellyn Hennecke  
 Siri Nelson  
 Aaron and Dorothy Nicholls  
 Frank Petrie and Tracy Dickerson  
 Larry and Gail Phillips  
 Peter and Christie Raffa  
 Nancy Reichley  
 Tim and Juli Reynvann  
 Robyn Ricks  
 Rebecca Rockefeller and David Campbell  
 Phil and Anita Rockefeller  
 Barry and Brooke Sams  
 Derek and Ariel Sanderson  
 Michael and Linda Schiewe  
 Bob Schoonmaker  
 Bob and Mary Jane Schwarz  
*In memory of Louise Schmidt*  
 Laura Seaver  
 Michael and Julie Smith  
 Joni Starr  
 Linda Stillman and Steven Finley  
*In memory of Nat Chandler*  
 Victor and Carolyn Streufert  
 Bruce and Karen Taft  
 Larry and Mikki Toimil  
 Colette Vogel Boeker and Warren Boeker  
 Audrey Watson  
 Craig and Lauren Wiley  
 Al and Brenda Williams  
 Jerry and Darby Young

**\$99 & under Wave**  
 Anonymous  
 Jeff Albright and Judith Kornbau  
 Jeff Anderson  
 Jeff Baierlein  
 Grant Bailey and Julie Bailey  
*In honor of Andy Witherspoon*  
 Nicholas Baisley

### \$99 & under Wave cont.

Art Bartel and Suzane Bartel  
 Clayton and Sharon Beaudoin  
 Herb and Erica Bergamini  
 Gwen Billings  
 Larry and Sue Broder  
 Jay and Christine Brown  
 John and Adrienne Brown  
 David Browning and Amy Goldthwaite  
 Jon Burke  
 Russ Cahill and Narda Pierce  
 Mollie Caka  
 Kevin Campion  
 Katie Chamberlain  
 David Chan  
 Phyllis Chandler  
 Catherine Collins and Erik Hall  
 Bernie and Ann Conley  
 Hal and Patsy Cook  
 Emilie Coulter and Peter Wobber  
 Robert and Elizabeth Cromwell  
 Lance and Natalie Delano  
 Mike Derzon and Robin Supplee  
 Rebecca Desrosiers  
 Frank and Tracy Dickerson  
 Kim Dietrich  
 Ingrid Dinter  
 Harold and Catherine Drews  
 Wick and Sheila Dufford  
 Louie Echols  
 Gail Eidinger  
 Herman Fabert  
 Simon and Rebecca Ffitch  
 Margaret and Charles Fitzgerald  
 Maradel Gale  
 William and Norma Geenty  
 Maria and Chip Goepfert-Magure  
 Elizabeth Gorton and Halsey Bell  
 Ralph and Carol Graves  
 Lizzy Grubin  
 Carl Haeffling and Pamela Johnson  
 Tom and Sue Haines  
 Einer and Marilyn Handeland  
 Svend and Edith Hartmann  
 Christina Hayes  
 Cathy Jeney  
 Wini Jones  
 Mike and Jeri Kalmbach  
 John and Jennifer Kimmerlein  
 Robert and Karen King  
*In honor of Brian King*  
 Alex Koerger and Tandi Rogers  
 Daniel Lafferty  
 Leonard and Lorena Landin  
 Fred and Zelda Laschever  
 Grace Lawrence  
 Alan Lee  
 Thomas Leschine and Katherine O'Neil  
 Aaron and Judy Levine  
 Dan and Clare Lewis  
 Janice Lewis  
 Brian Ludford and Tamara Tachdjian  
 Marcelle Lynde

### \$99 & under Wave cont.

Grant Macdonald  
 Cara Mathisen  
 Linda Maxson and Talbott Miller  
 Jennifer McColloch  
 Richard and Maureen Meslang  
 Roberta Miner  
 Kathleen Mix  
 Peter Morton  
 Pegeen Mulhern and Doug Greason  
 Kristi Nilson and Pat Sanford  
 Bill and Kerry O'Neill  
 Jon and Katie Owsley  
 David and Susie Paeth  
 Andy and Kathleen Peters  
 Cassie and Douglas Picha  
 Laura Pierce and Lorie Hamel  
 Gary Quitslund and Linda Whitehead  
 Colleen Reilly  
 Jim and Teresa Robinson  
 Wendy Schaefer  
 Jeffrey Schell  
 Peter and Meryl Shier  
 David and Carol Siebert  
 Diane Spaulding  
 Jim and Chris Taylor  
 Harry Taylor  
 Karen and Kelly Thornton  
 Peter and Barb Trospser  
 Jill Tutland  
 James and Barbara Vaughan  
 William and Connie Waddington  
 Honora Wade  
 Chris and Diane Walker  
 Ken Weiner and Kathy Fletcher  
 Maya Whitmont  
 Kathryn and Gordon Wickward  
 Mark Wilhelm  
 Dan Williams  
 Jennifer Wishinski  
 Quentin Yerxa and Karen Freisem





# Salish Sea Expeditions' 2007 Annual Report

## The Beginning of Another Decade of Discovery

We thank the following foundations, agencies, businesses, and organizations for their generous contributions received between 01/01/07 and 12/31/07 inclusive of gifts of cash, stock, products and services.

### Foundations

Blackie Foundation  
Ceres Foundation  
D.V. & Ida J. McEachern Charitable Trust  
Glaser Foundation  
Hayne Hipp Foundation  
Kirlin Foundation  
Morningside Foundation  
Stoneliagh Fund  
Suquamish Indian Tribe  
The Bainbridge Foundation, Inc.  
The Hugh & Jane Ferguson Foundation  
The JiJi Foundation  
The Martin Fabert Foundation  
The Seattle Foundation  
Tulalip Tribes Charitable Fund  
Windermere Foundation

### Government Agencies

City of Seattle  
College of Ocean and Fisheries  
University of Washington  
Washington Sea Grant

### Matching Gifts

Microsoft Corporation  
Nintendo of America, Inc.  
Washington Mutual

### Organizations

Center for Wooden Boats  
Four Winds \*Westward Ho Camps  
Odyssey Maritime Discovery Center  
Northwest Trek Wildlife Park  
Port Townsend Marine Science Center



### Businesses

10 Mercer  
35th Street Bistro  
A Touch of Class  
Adventure Hardware  
American Alpine Institute  
Anchor Environmental, L.L.C.  
Anthony's Restaurants  
Agua Verde Café  
Arthur Murray School of Dance  
B & O Espresso  
Blackbird Bakery  
Blue Sky Printing  
Buck & Gordon, LLP  
Caddell's Laser Clinic  
Captain's Nautical Supplies  
Christy Trotto Photography  
Countrywide Home Loans  
Cranium  
Cuttysark Nautical Antiques  
Dahlia Spa  
Daly's Paint & Decorating  
Dimitriou's Jazz Alley  
Eagle Pest Eliminators  
EatSushi.com  
Edgewater Hotel  
El Gaucho Seattle  
Emerald Downs  
Erbaviva  
Everett Aqua Sox Baseball  
evo  
Experience Music Project  
Fiala Design Works  
Finders Gifts  
Fish Brewing Co.  
Four Swallows  
Gill's Piano Tuning & Repair  
GordonDerr, LLP  
Gracewinds Perinatal Services  
Handymans Work of Art  
Heart of Bainbridge  
Helly Hansen  
HomeStreet Bank

### Businesses

Honey Bear Bakery  
Hotel Deca  
Icicle Outfitters and Guide, Inc.  
INTIMAN Theatre  
Island Books  
J. Lohr Vineyards & Wines  
Jillians  
Jubilee Fisheries Inc.  
KidsQuest  
Kupono Baskets  
Lakedale Resort  
Maritime Pacific Brewing Company  
McCormick & Schmicks  
Metropolitan Grill  
Mr. Alleyoop! (Alan Hirsh)  
Museum Quality Framers  
My Gym of Bellevue  
Nancy Gellos Studio  
Nintendo  
North Casades Institute  
Northwest Outdoor Center  
Novelty Hill-Januik Winery  
Oh! Chocolate  
Oil & Water Art Supply  
Olympic Brewing Supplies  
Olympic Music Festival  
On Safari Foods  
Pacific Continental Bank  
Patagonia Seattle  
PCC Natural Markets  
ProNet, Inc.  
RED Urban Spa & Lounge  
Redhook Ale Brewery  
Redington  
REI  
Romasco Designs  
Sage  
Science, Art and More  
Seattle Aquarium Society  
Seattle Asian Art Museum



### Businesses

Seattle Athletic Club Northgate  
Seattle Childrens Theatre  
Seattle Sailing Club  
Seaview Boatyard  
Selle Italia s.r.l.  
Silverleaf Landscaping  
SilverType Inc.  
SimplyFun  
Snohomish County Fire Dst. 1  
Sorrento Hotel  
Specialty's Café and Bakery  
Spectrum Dance Theatre  
Spin Alley Bowling Center  
Starpath School of Navigation  
Stoel Rives LLP  
Stonington Gallery  
Swanson Dental Association  
Tacoma Scuba  
Tatters  
Taylor Shellfish Farms  
The Alexis Hotel  
The Cake Lady Custom Cakes  
The Chandlery  
The Comedy Underground  
The Fabric of America Fund  
The Lake Kitchen  
The Magellan Group, Ltd.  
The Museum of Flight  
The Museum of Glass  
The Paddle Club  
The Seattle Running Co.  
The Spanish Table  
The Triple Door  
The Upper Crust Bakery  
Tom Douglas Restaurants  
Town and Country Market  
Tutta Bella!  
Whizzkids Academy  
Windermere Real Estate  
Capitol Hill & Oak Tree Inc.  
Woodland Park Zoo  
Yuen Lui Studios



We gratefully acknowledge the many staff, board and friends who generously contributed their money, time and efforts to Salish Sea Expeditions. Every effort has been made to list all contributors accurately. If, however, an error has been made, please accept our apologies and notify us at (206) 780-7848 ext. 3# or lorrieke@salish.org.

## Salish Staff: Inspiration in Action



*The fantastic program staff of spring 2008*

Hang around Salish long enough, and you'll often hear the question, "Where do you find your incredible staff?" The recipe is simple! First, create a dynamic, inquiry-based educational environment that combines the excitement of out-of-the-classroom science, the thrill of sailing and teamwork, and extended immersion in the outdoors. Then, gather a group of extraordinary individuals with the skills and motivation to shape that environment into their own unique teaching platform. Finally, add a boatful of eager students and teachers, and...Voilà! The Salish Magic.

Our program is lucky to attract such phenomenal educators from all walks of the teaching, sailing, science, and outdoor education worlds, with as varied and impressive a set of backgrounds as our students, teachers, and chaperones bring to each expedition. The majority of our staff have worked at multiple other preeminent outdoor and science education programs around the country before joining our team. Several have teaching certificates and classroom experience in both public and private K-12 schools. Their professional field research sites have included the ice shelves of Antarctica, the equatorial Pacific, the North Slope of Alaska, the Caribbean, the Gulf of Maine, and our own Salish Sea.

Meanwhile, the USCG licensed crew hail from respected sail training programs around the world, from the 130' tall ships of the Sea Education Association, to the schooner *Sultana* (Chesapeake), to the local schooners of Puget Sound. Three of our crew recently led the 1500-mile John Smith Shallop exploration, rowing and sailing around the Chesapeake Bay on an educational and historical mission following Captain John Smith's original 1608 route, which has now become the first all-water National Historic Trail in the U.S. Others spend the rest of the year working in legislative advocacy, environmental restoration, commercial fishing, agriculture, or adventure travel.

While the breadth of their experiences is surely remarkable, what makes the staff so exceptional is their combination of a deep passion for teaching, contagious energy, and tireless dedication to our students. The staff truly "walk the walk" when it comes to working hard and playing hard, and they teach (and expect) the students to have fun while they're learning and working together. Each combination of sailing and science staff creates a unique and exciting flavor for the individual expeditions, and the crew takes great care to connect with every student onboard.



*Salish Mate Erin Bostrom instructs a Bainbridge Island High School student on the finer points of sail handling*

The staff come to Salish for a variety of reasons, typically because we are unique in combining inquiry-based, out-of-the-classroom science with sail training and meaningful outdoor education. While we are explicitly not a conservation or advocacy organization, the staff tend to share a deep appreciation and sense of responsibility for our natural environment, and they relish the opportunity to introduce so many students to the wonders of their natural surroundings. Staff also value the wide range of age, demographic, and socio-economic groups that we serve, and our commitment to tailoring each program to meet the needs of individual groups and environments, rather than sticking with a rigid program structure for all. Our goal with each program is to teach as well as to empower, and the staff appreciate the growth in students' critical thinking, self-confidence, and teamwork that develops during each trip as the students prepare to take control of the vessel on their own by the final day.

*This trip would not have been so incredible without the outstanding staff! All crew/science members were extremely knowledgeable, enthusiastic, patient, fun...I could go on and on. And, of course, they are very cool (this is important for middle schoolers). They stay positive and encouraging with the students at all times, hold them to high standards, and don't expect any less. I watched as many of students seemed to blossom in their self-confidence; they rise to the challenge every time. I felt so fortunate to have them working with our students.*

*-Mt. Baker Middle School Science Teacher, Spring 2008*

Ultimately, the staff are drawn to Salish because as educators, they cherish the opportunity to work with so many other capable and inspiring teachers all at once, to learn from each other as they work with the kids day in and day out, and see to what heights they can take our program when they focus all of their energies together. As one of our science educators said, "I have studied in the Ivy League, and worked for seven years doing field marine biological research for NOAA, and I have never encountered a group of more qualified, passionate, committed, and hard working people than the Salish staff."

## Salish Sea Expeditions' Annual Dinner & Auction "Window on the Sound"



*Dale and Deborah Lantz ponder their choices of running crabs for the derby as Salish Educator Austin Hall discusses stats*

*Chip, the Crabtucky Derby winner races across the finish line*



*Port Commissioner Bob Kalmbach approaches the podium to claim his Crabtucky Derby Prize*



*Robert Manwaring holds his Dessert Dash cake designed by none other than The Cake Lady*



*Justice Mary Fairhurst, Board President Eric Laschever, and former Board Member Colette Vogel Boeker take a moment away from perusing the silent auction items to pose for a picture*



*Doug Krause celebrates winning the Hale's Ales Mariners/Red Sox Game package after a fierce bidding war*



*The famous Puget Sound Crabtucky Derby Track*



*Auctioneer Matt Smith coaxes the guests to donate "overshoes" while Mate Erin Bostrom demonstrates water's effect on exposed sneakers versus "overshoes"*

It was an evening of fine entertainment and fabulous fun at Salish Sea Expeditions' Annual Dinner Auction, "Window on the Sound" at the Bell Harbor Conference Center. On Saturday, April 19th, 233 guests gathered to help raise a record \$128,622 to support Salish's science-under-sail programs.

The night kicked off with an extensive silent auction hosted by auctioneer Matt Smith. As guests bid on everything from halibut and smoked salmon to a Nintendo Wii and a Laser sailboat, the renowned Canote Brothers provided a lively musical backdrop with their sprightly guitar and fiddle playing. But the big buzz of the evening belonged to Salish's First Annual Crabtucky Derby. For a fifty dollar donation, fifty guests chose from a collection of numbered student-created crab trading cards. Just before dinner, Board President Eric "Will Do Anything for Salish" Laschever, pulled out his trumpet and played "Call to the Post" – and the race was on! The crowd went wild as 50 crabs, whose numbers corresponded to the trading cards, raced claw-to-claw in two heats and a final round. It was initially a slow start for the crabs, who perhaps experienced a bit of stage fright when they realized that they were being videotaped and broadcast bigger-than-life on the giant ballroom screen. But a few finally picked up the pace and in the final round, the first place crab was a speedy little crustacean by the name of Chip "owned" by Port Commissioner Bob Kalmbach, who generously donated his winnings back to Salish.

The evening continued with an energetic Dessert Dash followed by the Live Auction, featuring a tantalizing array of items. A party for 30 aboard the Hale's Ales Double Decker Beer Bus with tickets to the Mariners/Red Sox game whipped up some frenzied bidding, as well as some fabulous board sponsored dinners, Crosby, Stills and Nash tickets coupled with a night at Willows Lodge, and a stunning photograph by National Geographic photographer, Bill Thompson. This year's Fund a Need portion of the auction featured 5th grade teacher, Mike Derzon, whose stories of Salish's impact on his class were riveting, crystallizing for everyone just how life-changing the programs are for so many students. In an impressive display of generosity, Salish guests raised their paddles for a record \$33,000!

# Salish Sea Expeditions' Annual Dinner & Auction "Window on the Sound"

*A Heartfelt Thank You to our Generous Sponsors...*



## *...and our Incredible Donors.*

- |                                       |                               |                                     |                                |
|---------------------------------------|-------------------------------|-------------------------------------|--------------------------------|
| 5th Avenue Theatre                    | Experience Music Project      | Leslie Bray McCoubrey               | Seattle Fire Department        |
| Afashionado Gallery                   | Fish Brewing Organic Ales     | Mike Gill's Piano Tuning and Repair | Seattle Food Tours             |
| Alki Kayak Tours                      | Tom Fitzsimmons               | Modular System Services             | Seattle Running Company        |
| Anthony's Restaurants                 | Four Swallows                 | Museum Quality Framing              | Seattle Sailing Club           |
| Bainbridge Performing Arts            | FourWinds*Westward Ho Camp    | The Museum of Flight                | Seattle Sonics & Storm         |
| Becky Meigs Photography               | Finn Garaas                   | Nintendo of America                 | The Seattle Mariners           |
| Blinx                                 | Nancy Gellos                  | North Cascades Institute            | The Seattle Theater Group      |
| BOKA                                  | Gilbert Cellars               | Northwest Trek                      | Seaview Boatyard               |
| Caddell's Laser & Electrolysis Clinic | Hale's Ales                   | Novelty-Hill Januik Winery          | Selle Italia s.r.l.            |
| Café Nola                             | Einer and Marilyn Handeland   | Karin Nyrop and Dennis McLearn      | Spectrum Kayaks                |
| Chris Cannon                          | The Harbour Public House      | Oil & Water Art Supply              | Storyville Coffee Company      |
| The Capital Grille                    | Helly Hansen                  | Olympic Brewing Supplies            | Thomas Stream                  |
| Captain's Nautical Supplies           | HelpShare                     | Olympic Music Festival              | Suquamish Clearwater Casino    |
| The Center for Wooden Boats           | Hotel 1000                    | Orion Ballroom                      | Taylor Shellfish               |
| Century Ballroom                      | Hotel Deca                    | Pacific Science Center              | Ten Mercer                     |
| Columbia Hospitality, Inc.            | Inside Out                    | Patagonia                           | Tingstad & Rumbel              |
| The Comedy Underground                | Island Fitness                | PCC Natural Markets                 | Tom Douglas Restaurant         |
| Cranium                               | Jillian's                     | Poppy Designs                       | A Touch of Class               |
| Cream of the Crop Ice Cream           | Captain Daniel Joram          | Port Townsend Marine Science Center | Ultero                         |
| Crystal Carpet Cleaning & Restoration | Jubilee Fisheries, Inc        | Sally Prangley                      | URJ Camp Kalsman               |
| Crystal Photography                   | Janice Lawrence               | Pro Net Inc.                        | Tom and Tali Wang              |
| Cutters Bayhouse                      | Molly Lawrence                | Puget Sound Partnership             | Washington Conservation Voters |
| Dancesport International              | League of Conservation Voters | Alan Rammer                         | Audrey Watson                  |
| David Dicks                           | Holly Levin                   | Red Envelope                        | Gerry Watson                   |
| Dimitriou's Jazz Alley                | Lift Personal Training        | Red Hook Brewing Company            | Wildfire Productions           |
| Dolphin Design                        | Ross and Lisa Macfarlane      | Romasco Designs                     | William Thompson Photography   |
| Eagle Pest Eliminators, Inc.          | Madoka Pan-Pacific Restaurant | Nancy Rumbel                        | The Willows Lodge              |
| The Edgewater                         | Magnolia Skin Care            | Sage                                | Windworks Sailing Center       |
| Garth Edwards                         | Janne Matter                  | Sailing In Seattle                  | Woodland Park Zoo              |
| Elliott Bay Marina                    | Mayflower Park Hotel          | Salish Lodge & Spa                  | Xeko - Matter Group LLC        |
| Emerald Downs                         | T.A. McCann                   | Seattle Athletic Club - Northgate   | Xinh's Restaurant              |
| Entercom Communications               | Brookie McCulloch             | Seattle Children's Theatre          | Yankee Clipper Foundation      |
| evo                                   | McCormick & Schmick's         |                                     |                                |

*We gratefully acknowledge the many staff, board, and friends who generously contributed their money, time, and efforts to Salish Sea Expeditions' Annual Dinner & Auction. A special thanks to Matt Smith and the Canote Brothers for their amazing talents that helped make this evening such a success. Every effort has been made to list all contributors accurately. If, however, an error has been made, please accept our apologies and notify us at (206) 780-7848 ext. 3# or lorrieke@salish.org.*



## Salish Sea Expeditions

---

647 Horizon View Pl. N.W.  
Bainbridge Island, WA 98110

NONPROFIT ORG  
U.S. POSTAGE  
PAID  
Silverdale, WA  
PERMIT NO. 111

**Address Service Requested**

*To update your mailing information, please contact us at [admin@salish.org](mailto:admin@salish.org) or (206)780-7848 ext. 0# .  
To sign up for our e-newsletter please visit our website at [www.salish.org](http://www.salish.org).*

## Salish in the News

### **Salish Sea Expeditions Awarded No Child Left Inside Grant from WA State Parks and Recreation**

Salish Sea Expeditions has been awarded \$52,500 in grant funds from the Washington State Parks and Recreation Commission, one of only 25 organizations and agencies around Washington to receive funds as part of the No Child Left Inside program, created to help children connect with nature. "We are thrilled that this funding is available from Washington State Parks," said Stephen Streufert, Salish's Executive Director. "We're proud to be among the inaugural recipients of this important grant."

Organizations receiving the grants include school districts, non-profit organizations, conservation districts and environmental organizations. Funds will be used to provide youth outdoor education and recreation programs. The 2007 Washington Legislature established the No Child Left Inside program, provided \$1.5 million in funds and appointed the Washington State Parks and Recreation Commission to administer the program. "It is very exciting to get this program on the ground so fast and get the awards made so organizations can get started getting kids outdoors," said Rex Derr, State Parks director. "Washington is the first state in the nation to have its Legislature establish and fund a No Child Left Inside grant program like this one. This puts Washington on the cutting edge of the national conversation going on right now about how essential it is that we provide a connection to nature for young people, for their own well-being and for the future health of our environment."

### **Salish Sea Expeditions Joins Combined Fund Drive**

Salish Sea Expeditions is pleased to announce that we have been approved to participate in the Combined Fund Drive for active and retired public employees in the State of Washington.

The Combined Fund Drive is a workplace giving program that enables public employees to contribute to their favorite non-profits and charities through payroll deduction or other convenient means. Since 1984, Washington State public employees and retirees have generously donated more than \$84 million to charity through the CFD. Salish had to be invited to participate and approved by the CFD in order to qualify as a charity eligible to receive funds.

Active and retired public employees in the State of Washington who wish to donate to Salish through the CFD can learn more at [www.cfd.wa.gov](http://www.cfd.wa.gov).