



Salish Sea Expeditions

(206) 780-7848 • fax (206) 780-9005 • info@salish.org • www.salish.org

Spring 2005

To inspire a passion for exploring, understanding and respecting the marine environment through hands-on scientific inquiry on Puget Sound.

A Documentary Film about Salish: The Producer's Notes

At the end of the dock, beside the *Carlyn*, the cinematographer performed a final camera check. Water lapped softly at the boat. I glanced at my watch and the near silence turned boisterous right on time when the yellow school bus pulled up at the head of the Anacortes dock. Twenty-four eager 8th graders from Mt. Baker Middle School dragged their gear off the bus and excitedly charged down the long wooden dock toward the *Carlyn*. The camera began to roll, capturing the arrival of these enthusiastic budding scientists, sailors and subjects of Salish's first documentary film.



A student concentrates on analyzing her plankton sample while the moment is caught on film

Perhaps it was their obvious enthusiasm for a four-day adventure at sea, or maybe it was because they've spent nearly half their lives inundated with reality TV shows, but these kids ignored the camera and microphone that recorded their every move and immediately got down to the business of science and sailing. They had their chosen hypothesis to test and a vessel they needed to learn to sail so that by day four they would be able to navigate us safely home. Nothing - not even the intrusion of cameras - would get in their way.

As a former video producer and a current board member of Salish Sea Expeditions, I was thrilled to be taking this journey with these bright, eager kids and to help Salish finally capture its story on video. Smitten by the organization when I attended a fundraising sail over two years ago, I subsequently joined the board, bringing with me a huge enthusiasm for Salish's inquiry-based, hands-on learning model.

But my zeal grew ten-fold when I had the privilege of being part of this expedition. None of my board work adequately prepared me to expect just how dynamic, enthusiastic and engaged the Salish staff was with these kids. Their passion was infectious, and every interaction was designed to empower the students and make them think.



Gretchen, the Carlyn's captain, instructs Mt. Baker students on the fine art of sailing under the watchful eye of the camera crew

The moment the kids stepped aboard, they instantly became part of a dedicated team of scientists and sailors. From the first orientation on the boat under bright blue skies, to the trip's finale when they proudly sailed the vessel back to Anacortes in weather that had turned rainy and cold, these 24 young people were constantly engaged, always on their toes, never idle, and joyfully immersed in an experience that is likely to stick with them for the rest of their lives. It was learning at its very best.

Back in the classroom, on our final day of shooting, we recorded the students' findings and interviewed them about their experience. There were many accounts about braving that last day of wet weather, the wonder they felt when looking through microscopes to study zooplankton, and the powerful feelings evoked when at last they sailed home by themselves. But it will always be Theresa's quote I'll remember best: "I felt proud of myself and everyone else. It's a big deal. It's an experience that's once in a lifetime for most people, and I would do it over again if I had the chance." So would I, Theresa....

Laurie Bauman Arnold, Board Member and Documentary Producer

<i>Inside...</i>		<i>2004 Annual Report</i>	<i>Insert</i>
Introducing Executive Director Stephen Streufert	2	Creature Feature: The Brilliant Western Sand Dollar	5
From the Director's Desk...	3	"Passport to the Puget Sound"	6
Meet the 2005 Seasonal Staff	4	Salish Supporters	7

Steering Towards Dawn: Introducing Executive Director Stephen Streufert

“Just steer towards dawn!” These four words leapt from Stephen Streufert’s cover letter applying to be Salish’s new executive director. In the first paragraph of this letter, Stephen recounts the terse orders he received at age 19, as he took the helm of an 80 foot fish tender in the storm tossed Gulf of Alaska. The thrill of the sea and its challenge fueled a passion for the wilds and a twenty year career in outdoor education which has lead him to Salish: a return to the sea and a new set of challenges. Stephen, as Renée Zellweger said to Tom Cruise in the movie Jerry Maguire, “You had us at hello.”

Stephen’s resume compliments his evocative letter. He’s held major leadership roles at the North Carolina Outward Bound School and directed leadership programs in the field for Outward Bound and the National Outdoor Leadership School. As President of the Board of Committed Partners for Youth, a non-profit organization providing mentoring programs for high risk youth, he knows the ropes of the non-profit world.

The board and staff are extremely impressed by his rich experience in all aspects of non-profit leadership and experiential education, his commitment to youth and to serving others, his keen understanding of the value of inquiry-based education, and his passion for the Puget Sound ecosystem. As you can tell, we’re wildly excited to welcome Stephen aboard.

Our executive director search, while lengthy and time consuming, affirmed how far Salish has come. We received over 130 applications from as far away as New Zealand. While Stephen stood out, we had a talented pool from which to choose. Each candidate that the board interviewed provided their own insights into how Salish might grow. The board listened and learned much about the best ways to further our efforts.

The search also provided an opportunity for board members, especially those on the search committee, to recommit ourselves to this enterprise. Two of our newest members, Vera Agostini and Katy Mathias, joined our most senior member, Steve Tan, in reviewing, ranking, and screening the vast candidate pool. The full board then spent an entire day talking to the top three candidates.

Our staff also effectively weighed in. Outgoing Executive Director Ellie Linen Low was there at each step. Lori Mitchell and Lorrie Kalmbach-Ehlers spent hours with the top three candidates and provided invaluable perspective to the Board’s deliberations.

Stephen joins the ranks of strong leaders at Salish. Our Co-Founders, Sophy Johnston and Kathy Murphy, had the guts to launch the program with little more than the thirst to open inquiring minds. Ellie Linen Low, our most recent executive director, had the brains, nerve, and persistence to institutionalize the vision. With Stephen, we again have the right person steering our course. Just as he did at age 19 at the helm of an 80 foot fish tender in the storm tossed Gulf of Alaska, Stephen is once again steering towards dawn: the dawn of a new and exciting era at Salish.

Eric Laschever, Board President

Salish Sea Expeditions

647 Horizon View Pl. N.W.
Bainbridge Island, WA 98110
ph (206) 780-7848
fax (206) 780-9005
www.salish.org info@salish.org

Staff

Executive Director
Stephen W. Streufert
stephen@salish.org

Education Director
Lori Mitchell
lori@salish.org

Director of Operations and Communications
Lorrie Kalmbach-Ehlers
lorrieke@salish.org

Program Coordinator
Jennifer Wishinski
jen@salish.org

Administrative Assistant
Ellen Hendricks
admin@salish.org

Board Members

Laurie Bauman Arnold
Children’s Media Writer

CDR Thomas Callahan, M.M.A.
Chief Scientific Support Coordinator
NOAA HAZMAT

Kimberly E. Corrigan
Education Outreach Director
Positive Futures Network

Roger Coulter, M.B.A.
Senior Manager
World Wide Applications Finance
Amazon.com

Ken Fabert, M.D.
Urgent Care Physician
Group Health Cooperative

Alexander J. Koerger, M.Ed.
Science Teacher
Charles Wright Academy

Eric Laschever, JD
Partner
Stoel Rives LLP

Katy Mathias, M.P.P.M.
Principal
Fractal Consulting

Thomas S. Wang, P.E.
Partner
Anchor Environmental LLC

Katherine F. Wellman, Ph.D
Private Consultant
Marine Resource Economics and
Coastal Management

*Teamwork is key
in this fine display
of oaranship by
students of Brighton
Elementary, a
returning school of
four years*



From the Director's Desk...



Salish's New Executive Director Stephen Streufert

When the "For Sale" sign hit the front yard of our former home in Eugene, Oregon, I began to share with friends and neighbors news of my transition to Salish. In these conversations I conveyed a strong sense of pride in my new association to Salish's exceptional programs and their

traditions of innovation and quality. I am thrilled with the opportunity to lead this dynamic organization, and ready to roll up my sleeves and address our challenges and opportunities.

In the week leading up to our move, a neighborhood girl came up to me during the seemingly obligatory pre-moving yard sale and inquired about Salish. She stated emphatically: "I wanna be a Marine Scientist!" Her clarity and sense of purpose was acute. A truly engaging aspect of the Salish program is the creation of experiences that have the ability to instill and propel such career interests in youth.

I believe that when students are given a great model for learning, they will seek to replicate that experience in other learning arenas. Salish's model for learning creates an experience where the students are given, to the highest extent possible, ownership, direction and influence in guiding the learning process. My hope and belief is that when students leave our programs, they will have the insight and confidence to transfer this new awareness to other areas of their education. In teaching youth to assume more responsibility for their education, we have a fantastic opportunity to ignite a true life-long passion for learning.

The quality of the people who are driven by the Salish mission is outstanding. In May, I participated in a three day program aboard the *Carlyn*, witnessing first hand the passion and excellence of our programs and staff. Similarly the board and the office staff are comprised of talented and dedicated individuals; I am impressed by the feelings of optimism and creativity coupled with strong organization and strategy. I'm particularly grateful to Ellie Linen Low for her dedication to creating a supportive transition and her personal support for me as I seek to fill the large shoes that she has worn in her exemplary leadership tenure.

The continued success of Salish will require strong connections to the communities surrounding Puget Sound. As we explore future directions, partnerships and opportunities, I will actively listen to the needs, perceptions and beliefs of participants, supporters and educators. I welcome and encourage your participation in this exciting growth process. Please feel free to contact me at any time; together we will chart the future direction for the continuation of Salish's successful journey.

Stephen W. Streufert, Executive Director

Colleague's Column: *The Center for Wooden Boats*

Salish Sea Expeditions is proud to feature an article every newsletter from a partner organization in the environmental or nautical education community. By doing so we hope to present additional opportunities available in the Puget Sound region to our readership.

The Center for Wooden Boats is a privately funded, non-profit, volunteer based, interactive museum and community center. What does that mean? The CWB operates a series of floating docks and houseboats in Lake Union where everyone is welcome to come down and interact with our 100+ historic and traditional boats, and admission is free. We also offer a variety of programs for the old and young alike:

- Sailing lessons for ages 9 and up in a variety of historic small craft, from El Toros to 18th century Longboats
- A unique offering where anyone can come down and rent a historic sailing or rowing boat for the afternoon.
- Our expanded maritime skills workshops offer over 130 different classes throughout the year in courses such as Small Boat Construction and Bronze Casting.
- Playing host for a plethora of free boat shows this year.
- Through our free CAST OFF! public sail program, offered on Sundays, anyone who shows up gets the chance to go boating on Lake Union, sometimes even using our historic, wood fired, steam launch Puffin.
- By partnering with several private and public middle schools, we hope to incorporate boat building and sailing experiences into their curricular offerings.

Like Salish Sea Expeditions, we believe that maritime experiences are a great way to impart learning to students. We do this through our programs in Seattle, the nearly 2000 students we provide hands-on field trips to annually, our own learning expedition programs conducted aboard our 26' oar and sail powered longboat, *Discovery*, and helping connect students to other education vessels and programs.

Because of our location in Seattle's urban center, in the coming year we are looking to help link Seattle area students with Washington's sail education community. Our vision is a dock and classroom space on South Lake Union for vessels with education programs (as well as the necessary dockside support) to either start their program at or use us as a classroom stop along the way. With the end goal of helping quality programs like Salish continue their success as we continue ours. If you're ever in Seattle, stop by for a row or a sail, or visit our web site www.cwb.org for further opportunities.

***Jake Beattie, Waterfront Programs Manager
The Center for Wooden Boats***

A cluttered driveway?

***Donate your vehicle or boat to
Salish Sea Expeditions, take a generous tax
deduction, and feel great knowing you are helping
to introduce countless youth to science at sea.***

Meet the 2005 Seasonal Staff

Salish Sea Expeditions has a history of attracting and retaining highly qualified staff who bring with them a strong understanding of the program, a love of science and sailing, and an enthusiasm for working with students. Welcome to the 2005 program team!

Jeff Anderson, Educator - Jeff is returning for his third season with Salish. A graduate of the University of Richmond and veteran of outdoor education, Jeff spends his summers as a naturalist in Denali National Park and weaves his tales of Alaska into his teaching.

Kevin Campion, Deckhand - A Snohomish native, Kevin recently returned from a research expedition in Panama, and is currently enjoying settling back into his Seattle home. With a keen understanding of sailing, a captain's license, and a familiarity with the *Carlyn*, Kevin brings to Salish an rich enthusiasm for teaching youth at sea.

Dave Carlson, Mate - A graduate of Hamilton College with a degree in Geology, Dave has worked most recently with the Sea Education Association as a marine scientist and educator. He has been a part time staff member at Salish for the past 2 years and brings a love for teaching, sailing and science to the program. Dave recently earned his Captain's license, and we are thrilled to have him on full time!

Sylvia Graham, Educator - Originally from California, Sylvia now considers Seattle home. She graduated from the UW and fell in love with marine science through work at the Friday Harbor Labs. Sylvia is returning to Salish for a second season after spending time traveling in South and Central America.

Janice Lewis, Educator - Although new to the Salish Sea Expeditions staff, Janice is no stranger to marine science, sailing, and the Puget Sound. Janice graduated from Bates College with a degree in biology, emphasizing marine ecology. Skilled in science, education, sailing, and music, Janice makes a great addition to the Salish team.

Gerry Santillan, Educator - A graduate of Humboldt State University, Gerry's degrees in marine biology and zoology prepare him well for helping students explore the creatures of Puget Sound. Gerry is enthusiastic about inquiry based learning and brings with him years of diverse experience in education and sailing!

Gretchen Stuppy, Captain - Originally from the Southern Maine Coast, Gretchen began sailing at age 12. Returning to Salish for her third year, she brings with her extensive sail experience and a flair for engaging students in hands-on lessons. A certified classroom teacher, Gretchen's contributions to the Salish program have been enormous.

Eulalie 'Lal' Sullivan, Deckhand - Returning to Salish for her third season, Eulalie brings with her extensive sailing experience, a strong understanding of marine biology, and enthusiasm for working with students. Also involved with the Seattle Aquarium, Lal provides a great perspective for students interested in learning more the marine environment.

Join us for a Program!

Sea Investigators

For: Groups of up to 30 students, including classrooms, community groups, home school associations, scouts, etc.
When: mid-March through mid-October

Using an inquiry based learning approach, we guide students of all ages through the process of designing, conducting, and presenting a real marine research project. What's more, we work with your group to tailor our programs to meet your special interests and needs, which makes every program unique.

Sea Educators for Teachers!

For: Educators
When: Spring & Fall

Salish Sea Expeditions is offering a chance for teachers to learn first-hand about our unique Inquiry-Based program. You will have the opportunity to use our oceanographic sampling equipment, tour the 61' sailboat, *Carlyn*, discuss Inquiry-Based science education with the staff, help with sailing and talk with other teachers who have taken students out with Salish Sea Expeditions!

Three Washington State Clock hours are available to participants for a fee of \$10.00, payable to Puget Sound ESD. (For those not wishing to register clock hours, the sail is free.)

Team Building AdVentures

For: Professional and Executive Groups
When: March through October

Salish Sea Expeditions presents an adult team-building program aimed at professional and executive groups. Through daylong adventures on a 61' sailing vessel, corporate and other adult groups will engage in hands-on team building practices. Participants will experience unique and effective learning opportunities through group development challenges, facilitation, and processing, improving your team's effectiveness back on land.

Please contact Lori Mitchell for exact dates and availability for the above programs at (206) 780-7848 ext. 2# or lori@salish.org.

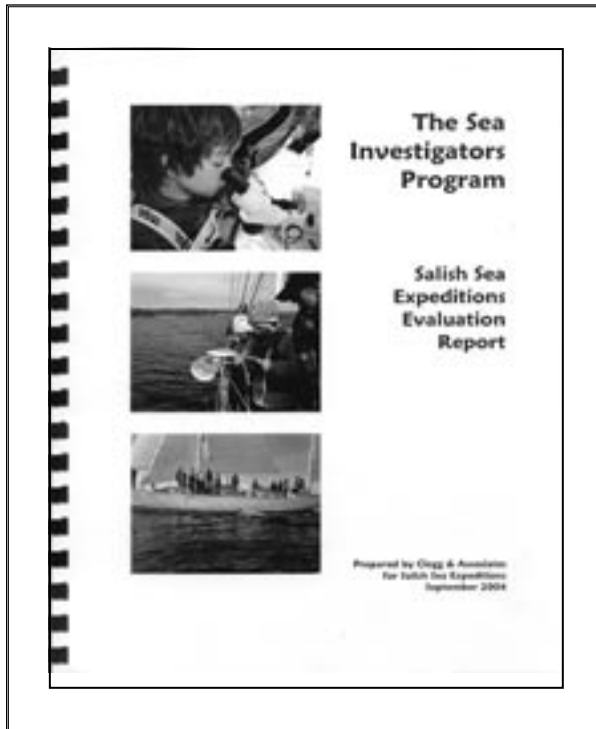


During a Shoreline Home Education Program's watch meeting a student dons the designated speaker hat while explaining the day's



Salish Sea Expeditions Annual Report

2004 - A Year of Evaluation



Testing Our Own Hypothesis: Measuring the Success of the Salish Program

After eight successful years, we are pleased with high praise in teacher recommendations and student evaluations, rapidly growing enrollment, and a fantastic group return rate (50-75% annually). We hold the belief that we are delivering outstanding hands-on science education programs that help youth develop critical thinking and decision-making skills. In 2004 we quantitatively tested this hypothesis with help from the evaluation firm of Clegg and Associates, and through a thorough outcomes-focused evaluation process we demonstrated the impacts of Salish programs on participants.

The evaluation was implemented on all 2004 programs for 6th and 7th graders (9 programs including a total of 150 youth). We enlisted trained program observers and interviewers, gathered information through pre/post student surveys, program observations and retrospective teachers' surveys. The results of this extensive evaluation project are overwhelmingly positive, confirming the qualitative data Salish has collected for years: Salish programs have a solid impact on the students we serve, advancing their interest and knowledge of science, and their understanding of sailing and navigation. The evaluation found statistically significant

improvements on the majority of our measurable outcomes. Clegg and Associates reported that these statistically significant improvements are relatively unusual for program related evaluation projects, further supporting and confirming our deeply held convictions.

Specifically, students showed marked improvement in their knowledge of scientific equipment and their knowledge and comfort with sailing and navigational sciences. Observers noted obvious changes in students' willingness to use teamwork to problem solve, and all teachers surveyed reported that the Sea Investigators program strongly supports their efforts in meeting the Washington State Essential Academic Learning Requirements.

In 2005 we will formally assess the final evaluation findings, identify program areas needing improvement, and adapt Salish programs to ensure that we're achieving our stated goals and outcomes. For example, the preliminary results suggest that we could do a better job developing student knowledge of Puget Sound health and student interest in pursuing science in further studies or as a career. We intend to focus our 2005 curriculum development efforts on these and other areas that need strengthening suggested by the evaluation results. We are grateful for this information, confident in our ability to bolster our curriculum and program design, and excited to tackle these issues to make our programs even stronger.

Funding for this extensive evaluation was given, in part, by the Washington Sea Grant, Office of Marine Environmental and Resource Programs. Copies of the evaluation report are available upon request.

"The teacher onboard [this Sea Investigators program] has a student who was totally changed by her Salish experience. Before the program, the student had been very shy and never really talked in class. She was mostly a "B" student in science and math. The teacher said that the student's Salish trip gave her more confidence. She started playing a couple sports. She ended up getting the highest WASL science scores in the class. The teacher said about the student's dramatic turnaround, 'I attribute it all to [Salish]'"

- written comments of an on-board
evaluation observer



Salish Sea Expeditions Annual Report

2004 - A Year of Evaluation

2004 Highlights

Sea Investigators

In our spring season we worked with 18 schools and other groups and served a total of 368 students. These youth came from 11 public schools and 2 private schools in Washington state, in addition to schools from as far away as Colorado and Alaska! Expeditions sailed out of Seattle, Bainbridge Island, Edmonds, and Anacortes.

Sea Explorers and Joint AdVentures

We offered a week long summer camp program, continued our commitment to collaboration through joint programs with Pacific Science Center/Mercer Slough Environmental Learning Center and developed a new and highly successful program with the Seattle Aquarium. These programs served a total of 78 students.

Sea Educators

Science education workshops were offered to 94 teachers to introduce the inquiry-based method of teaching science, provide an overview and hands-on trial of our scientific research equipment, explain Salish programs and encourage participation. Through a partnership with Puget Sound Educational Service District, we were able to offer continuing education credits to teachers attending workshops.

Team Building AdVentures

Fifteen members of Cobalt Group's finance team participated in the inaugural corporate team building sail in late September. This group immersed itself in a series of team building exercises designed to foster teamwork, build communication skills and push individuals to try new things. This new program generates revenue for Salish while introducing a new population - corporate teams- to Salish's mission and the Puget Sound.

Events and Open Sails

Throughout the year, Salish offers special events to engage teachers, donors, and community members in our work. In 2004, we greatly increased community outreach efforts and conducted numerous presentations to local groups, yacht clubs, etc. We also c□ individuals.

Low Income Initiative

In 2004, Salish began a concerted effort to reach out to students in the region who may not otherwise be able to take advantage of our multi-day Sea Investigator programs through the implementation of a "Low Income Initiative." Although we strive to keep program fees low and affordable (public school students comprise well over half of our total participants), each year many interested low-income youth are unable to raise the necessary funds. Salish board and staff are committed to continuing our work with low-income students. In 2004, we provided programs to four qualifying local schools- a total of 90 students- at substantially reduced program fees. In 2005, we will be serving five local schools at the same reduced fee. With their teachers, we hope to expose these students to a new world of science and learning.



Scholarship recipients from the outstanding program New Futures learn to navigate the waters of Puget Sound



Joint AdVenture participants from the Seattle Aquarium proudly display the ready to deploy Niskin bottle

Inquiry and Inspiration: A Documentary about Salish

Thanks to countless hours of donated work and a generous financial contribution, Salish programs may soon be coming to a theatre near you! Film maker Chris Mosio, Board Member Laurie Bauman Arnold, and film editor Lois Shelton teamed up to document the educational magic of a typical Salish program. This 20-minute film is filled with images of students working on hands-on research projects while navigating Carlyn, and interviews with students, teachers, and Salish. We look forward to sharing this tool with teachers, potential staff, and other supporters about our programs. Copies are available for your viewing pleasure! Please contact us at info@salish.org to receive a DVD.



Salish Sea Expeditions Annual Report

2004 - A Year of Evaluation

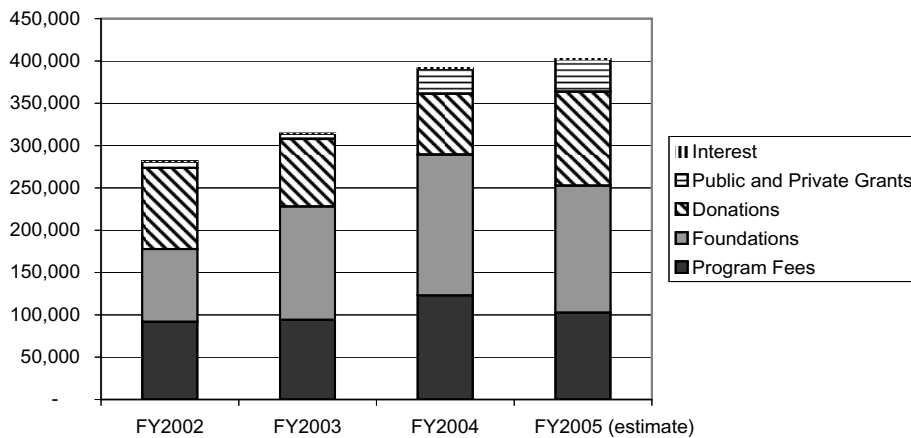
Financial Overview

Building a Stronger Organization

Continued excellent fiscal and operational management in 2004 has put Salish Sea Expeditions on a solid financial footing entering 2005. With the help of five new active board members, fundraising efforts proved highly successful, and we substantially increased gifts from individual donors and foundations. The team manages cash flows effectively throughout the year - making business decisions based on expected cash balances projected 18 months into the future. Revenues and program expenses continue to grow as the programs grow in a sustainable pattern, and the board and staff are able to make key investments in mission-driven programs with an eye towards maintaining financial health and meeting the objectives in our current strategic plan.

Roger Coulter, Board Treasurer

Source of Funds - Fiscal Years 2002 - 2005 (estimate)



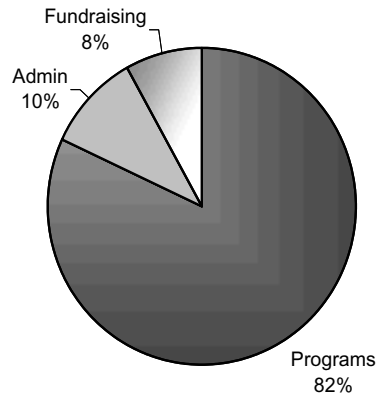
Sources of Funds

In Fiscal Year 2004 and 2005 Salish committed to offering a substantial percentage of programs to low-income schools - foregoing a portion of program revenue which is evident from the moderate growth in program fees despite an increase in actual program days. Foundation and public and private grants are making up the difference in direct funding of low-income programs.

Uses of Funds

Salish continues to operate very leanly - 82% of expenses are the programs themselves, with just 10% going to administration, 8% to fundraising. The Salish management team has proven they can effectively scale both to the season and to annual growth.

Use of Funds - Fiscal Year 2004





Salish Sea Expeditions Annual Report

2004 - A Year of Evaluation

We thank the following groups and individuals for their generous contributions received between 01/01/04 and 12/31/04.

Foundations

Bill & Melinda Gates Foundation
 Bruce R. and Jolene M. McCaw Fund
 Charlotte Martin Foundation
 D.V. & Ida J. McEachern Charitable Trust
 Edwards Mother Earth Foundation
 Eulalie Bloedel Schneider Foundation
 Gordon and Betty Moore Foundation
 Harrington-Schiff Foundation
 Hugh & Jane Ferguson Foundation
 Jeffris Wood Foundation
 Kitsap Community Foundation
 Medina Foundation
 The Norcliffe Foundation
 Norman Archibald Charitable Foundation
 One Call for All
 OneFamily Foundation
 Project AWARE Foundation
 The Russell Family Foundation
 The Salem Fund of the Rodman Foundation
 Seattle Biotech Legacy Foundation
 The Seattle Foundation
 Seattle Yacht Club Foundation
 Sidney Fund
 Washington Foundation for the Environment

Government Agencies

Environmental Protection Agency, Region 10
 King County Department of Natural Resources and Parks
 Washington Sea Grant

Businesses

Adobe Systems, Inc.
 Blue Sky Printing
 Dr. Bronner's Magic Soap
 Holland America Line, Inc.
 Horton Lantz & Low
 Inflatable Boatworks
 Mercury Marine
 Island Financial Consulting
 ProNet, Inc.
 T.Greer Consulting Services
 Verizon

Matching Gifts

Amgen Foundation
 Microsoft Corporation

Organizations

Bainbridge Chamber of Commerce
 Bainbridge Island Fire Department
 Four Winds* Westward Ho
 ONE/Northwest

\$5,000+ North Star Society

Jonathan & Leila Linen

\$1,000-\$2,499 Tide

Tom Alberg & Judi Beck
 Debbi & Paul Brainerd
 Dan Hales
 Sophy Johnston
 Yulin & Chor Weng Tan
 Steve Tan

\$500-\$999 Breaker

Richard Flamm & Vesna Somers
 James Johnston
 Toby & Jerry Levine
 Janet & Bill Pauli
 Colette Vogel Boeker & Warren Boeker

\$250-\$499 Crest

Rodney McKenzie
 Thomas Mueller & Heidi Stamm
 Charles Sitkin
 Tres & Robert Small

\$100-\$249 Swell

Tobi & Bruce Andrews
 Christine & Jeff Arnold
 Jean Beard
 Michael Campbell & Kari Nasby Campbell
 Esther Chang & Dale Kunkel
 Judy & Tom Curran
 Mary Anne & Roger Dane
 Alexandra Davis Rosenthal
 & Michael Rosenthal
 Blair & Jeff Demers
 Mary Kay Dolejsi & Chris Russell
 Charles Eriksen & Alden Garrett
 Jeff Goodwin & Carolyn Craig
 Cynthia & Rick Gould
 Carol & Marc Hershman
 Gretchen Hund & Ted Andrews
 Candy & David Low
 Lisa & Ross Macfarlane
 Andie & Brian Mackin
 Meryl & Peter Shier
 Charlotte Sudduth
 Susan Tully
 Betsy & Bruce Wagner
 Ken Weiner & Kathy Fletcher

\$99 & under Wave/Ripple

Erica & Herb Bergamini
 Susan Clauson & James Koskinen
 Patricia Ehlers
 Christian Fitzgerald & Margaret Diaz
 Chuck Fowler
 Norma & William Geenty
 Diane & Mike Gillespie
 Marilyn & Einer Handeland
 Betsy & John Kelly
 Bernard Kessler
 Zelda & Fred Laschever
 Cameron Linen
 Gabriela & Miguel Llanos
 Hubert Locke
 Seth Low
 Linda Maxson & Talbott Miller
 Terry & Brian McKenna
 Beth & Benjamin Pollock
 Ala Reid
 Sarah Richards
 Sara Rusche
 Greg Shelton & Beth Bryant
 Laura & Bo Weingaertner
 Linda & Erik Zettler

In Kind

Meg Evans
 Diane & Bob Kalmbach
 Manu & Charley McGee
 Lori & Stuart Mitchell

Volunteers & Valuable Advice

Goodwin Gibbons
 Dave Low
 Stuart Mitchell
 Kirk O'Donnell
 Jill Sheldon
 Stuart Stranahan
 James Thomson
 Becca & Bill Wellington
 Richard Strickland

Special Thanks To...

- One Call for All donors that designated funds for Salish
- Horton Lantz & Low for our beautiful display pieces
- Andrew Burkhalter and ONE/Northwest for their work on our new web site and ongoing technical support
- Charley McGee for his technical support
- Bill Davis for his insurance advice

We are grateful to all recognized below that added their efforts to our wonderful documentary!

- Chris Mosio for his film making talents
- Lois Shelton for her brilliant editing
- Nancy Rumbel for her beautiful original music score
- Narada Records for their generosity in allowing us the use of Tingstad & Rumbel's title cut from their 2004 Emmy Award winning CD "Acoustic Garden"
- Jeff Whidden and the participating students of Mount Baker Middle School
- Laurie Bauman Arnold for going above and beyond again

We gratefully acknowledge the many alumni, parents, educators, staff, board and friends who generously contributed their money, time and efforts to Salish Sea Expeditions. Every effort has been made to list all contributors accurately for the year 2004. If, however, an error has been made, please accept our apologies and notify us at (206) 780-7848 ext. 3# or lorrieke@salish.org.

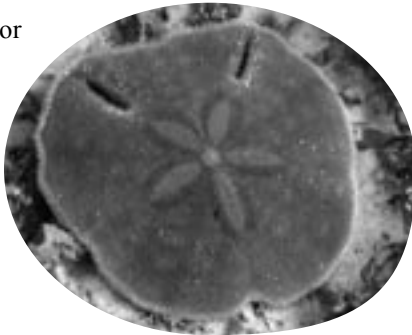
Creature Feature:

The Brilliant Western Sand Dollar

As a relative “newbie” to the Pacific Coast I am constantly amazed by the brilliance of the sand dollar. On one of my recent excursions to the tidal flats, sand dollars just suddenly appeared underfoot, all over, under and around, like a purple, velvety pile of gold. Hundreds, even thousands, of velvety flat disks lay at my feet. These pentaradial, calcareous tests, once prized as the ultimate seashore trinket from my younger beach going days, were alive! Buried under the sand like a space ship that landed half underground and half above, these at the water’s edge seemed most intriguing. I had only seen Sand Dollars underwater, or washed up, bleached and sunbathed, often broken or cracked open. I was in awe.

The Western Sand Dollar, *Dendraster excentricus*, resides in generally calm or protected inlets and bays, mostly in the low intertidal and subtidal zones. Up to 3” in diameter, they appear velvety when alive due to their spines, which are tightly packed and ready for wear.

The *D. excentricus* may sit or stand, depending upon current speed and food availability. In a stiff current, the sand dollar will often lie flat in the sand, or partially buried, and gropingly forage for diatoms and detritus. In lighter current they will “stand up,” utilizing the nutritive waters as underwater conveyer belts, and pick out crustacean larvae, diatoms and small copepods. The entire underwater mat of sand dollars will face in the same direction, much as sunflowers would in a field to face the sun. As the water rushes over their top side, an eddy is created on the ventral surface and often this acts to trap the water near the mouth side, in turn trapping the floating nutrients and plankton. They use a mucus flow to funnel this food into their mouth parts.



Fancy Facts:

- The mouth parts of a sand dollar are called Aristotle’s Lantern, named after the man who wrote the first natural history of their presence and use.
- The five hard teeth parts that make up Aristotle’s Lantern are often referred to as ‘doves’, referring to their shape.
- Sand dollars reproduce using broadcast spawning, where eggs and sperm are freely discharged and meet up in the water column. The resulting larvae drift about for almost 160 days!
- They can live to be 50 years old, although most reach a maximum of 10 years.
- Smaller sand dollars will sift out the sand collected in their gut through feeding and reserve it in a compartment in the intestine. This ‘weight belt’ helps to keep the little guys grounded in rough seas.
- The Western Sand Dollars range extends from southern Alaska continuously along the coast of North America ending at Baja California, Mexico. Or the equivalent of approximately 3600 miles!

Jennifer Wishinski, Program Coordinator

Salish Board Welcomes New Members

Kimberly E. Corrigan, M.A.

Kim directs education outreach for YES! magazine, a journal of environmental sustainability and social justice. She was based in Limassol, Cyprus for six years as the International Education Director for a Dutch company overseeing schools in Eastern Europe, China, Russia and the Ukraine. Prior to that, she was the Leadership Education Coordinator for Washington State University and taught educational psychology. After Cyprus she was a senior manager at Gear.com. Kim has BA and Masters degrees in Communications and Political Science, from Washington State University. She loves sailing, scuba diving, and connecting adults and youth with mother nature.

Alexander J. Koerger, M.Ed.

Alex Koerger is a middle school science teacher at Charles Wright Academy in Tacoma. Prior to teaching, Alex worked as the coordinator for the NASA Educator Resource Center and as a research associate at the NASA Goddard Space Flight Center in Greenbelt, Maryland. He is also a veteran of the United States Navy where he served as an in-flight electronics technician aboard P3-C aircraft. Alex earned his BS in zoology from the University of Washington and subsequently his M.Ed. in secondary education from Western Washington University.

Thomas S. Wang, P.E.

Tom is a partner at Anchor Environmental, LLC, a firm that specializes in environmental cleanup of the aquatic environment. He manages sediment remediation, dredging and coastal engineering projects nationwide. Tom was the Western Dredging Association’s “2004 Dredger of the Year”, and currently serves on WEDA’s board of directors. He is a graduate of the University of Washington’s Civil Engineering program.

Calling All Volunteers

Salish Sea Expeditions is always looking for excited volunteers. A variety of opportunities are available.

If you are interested in finding out more about volunteer opportunities contact Lorrie Kalmbach-Ehlers at (206) 780-7848 ext. 3# or email her at lorrieke@salish.org.



Marine Science Educator Jeff Anderson helps a weather ready group of Colorado students prepare the seine net for sampling

“Passport to the Puget Sound” Salish Sea Expeditions 1st Annual Celebration and Auction



Salish's new Executive Director Stephen Streufert (right) takes a moment to pose for a picture with his wife Lisa (left) and friend Michelle Perkins (center)



Marty Reimer, a familiar voice as the afternoon host at KMTT 103.7 "The Mountain", lends his talent as auctioneer



Guests ponder their luck at purchasing bottles of masked wine from the "Wine Boat"



Guests enjoy a delectable feast from the buffet



Ellie Linen Low, Salish's former Executive Director, accepts a token of gratitude from Board President Eric Laschever

Relief staff and volunteer extraordinaire Grant Macdonald, along with friend Jodi Wilmoth, check out the Sage Fly Rod and Reel donated as an auction item



The beautiful setting at the Seattle Aquarium



Board Member Tom Callahan points out auction items to a tableful of friends

On the eve of April 1st, 2005, two hundred "Passport to the Puget Sound" guests gathered at the Seattle Aquarium to share in the accomplishments of Salish Sea Expeditions. Highlights of the evening included a recognition of outgoing Executive Director Ellie Linen Low's successes and contributions, a warm welcome to new Executive Director Stephen Streufert, as well as the premiering of Salish's outstanding documentary.

Salish Sea Expeditions thanks the following groups and individuals for their generous contributions received between 01/01/05 and 04/30/05.

Foundations

Bainbridge Foundation
Bill & Melinda Gates Foundation
The Braitmayer Foundation
The Burning Foundation
The Glaser Foundation
Gordon and Betty Moore Foundation
J. Heller Charitable Unitrust
Moccasin Lake Foundation
Naughtin Family Foundation
The Salem Fund of the Rodman Foundation

Government Agencies

King County DNR and Parks

\$1,000-\$2,499 Tide

Leila & Jonathan Linen

\$500-\$999 Breaker

Michele & Steve Heller

\$250-\$499 Crest

Tres & Robert Small
Jennifer & Len Jordan

\$100-\$249 Swell

Esther Chang & Dale Kunkel
Betsy & Dave Chappelle
R.C. Chappelle
Harriet & Steve Davis
Deirdre Doyle
Carol Furry & Ron Kessler
Virginia English & Stephen Holt
Carol & Marc Hershman
Susan & John Holt
Kathleen MacFerran
& John Davis Jr.
Andie & Brian Mackin
Chris Mosio & Jennifer Loudon
Carol Rava Treat & Noel Treat
William Ross & Margot Dick
Diana & Ron Schneeweiss
Audrey Watson

Volunteers & Valuable Advice

Sophy Johnston
Catherine Lanham
Kathy Murphy
Kirk O'Donnell
Bob Schoonmaker
Jill Sheldon

Businesses

Blue Sky Printing
West Marine

Matching Gifts

Amgen Foundation
Microsoft Corporation
Nintendo of America, Inc.

Organizations

Bainbridge Island Fire Department
Port of Brownsville

\$99 & under Wave/Ripple

Maureen & Maxime Albi
Jennifer Angier
Leslie & Andrew Bartlett
Edward Berschinski
Carol Cockrill & Conrad Albert
Richard Corff
& Elizabeth Robinson
Tara & Mark Demick
Galit & Sol Ezekiel
Eva Freeman
Norma & William Geenty
Carolyn & Roger France
Marilyn & Einer Handeland
Taina Honkalehto & Ed Melvin
Julie Hull
Gabriela & Miguel Llanos
Barbara and Frank Magusin
Linda Maxson & Talbott Miller
Adrienne & Charles Miller
Judy & Richard Nelson
Jennifer Niles
Beth & Benjamin Pollock
Erin Purcell
Katie & Jon Owsley
Jill Sheldon
Katie & Larry Short
Silje Sodal & Peter Claar
Matthew Sudduth
& Anne Rouse Sudduth
Ken Weiner & Kathy Fletcher
Carolyn & Victor Streufert

In Kind

Stephanie Mathisen

Salish Sea Expeditions would like to thank the "Passport to Puget Sound" sponsors, donors, and volunteers, for their incredible gifts that made our first event possible. A word of thanks to Tami Fairweather for her efforts in making this event so wonderful.

Sponsors

Anchor Environmental, L.L.C.
Bean Environmental
Manson Construction
Maritime Pacific Brewing
Cricket Cola
Caffe Ladro

In Kind Donors

Laurie Bauman Arnold and Stephen Arnold
Arista Wine Cellars
Argosy Cruises
Betz Family Winery
Cafe Nola
The Cake Lady
The Center for Wooden Boats
Chateau Ste. Michelle
Cookies
Eagle Harbor Inn
Edgewater Hotel
Essential Baking Company
Pat and Larry Freeman
Holland America
Katy Mathias
Sage Manufacturing
Olive You
Seattle Sailing Club
Spectrum Kayaks
The Stock Market
Marty Reimer-KMTT The Mountain Radio Station
Bill Ross
Eulalie Sullivan
The Tasting Room

Volunteers

Mike Burghart
Carrie C. Byron
Maureen Callahan
Michael Campbell
Ninyana Dent
Jamie Doyle
R.J. Ehlers
Shane Freeman
Amos Freeman
Simon Haas Geerlofs
Christopher Jones
Dave Low
Stuart Mitchell
Larry Novak
Maggie Ost Dahl
Jill Sheldon
John Thompson
Doug Wells

We gratefully acknowledge the many alumni, parents, educators, staff, board and friends who generously contributed their money, time and efforts to Salish Sea Expeditions. Every effort has been made to list all contributors accurately through April 30, 2005. If, however, an error has been made, please accept our apologies and notify us at (206) 780-7848 ext. 3# or lorrieke@salish.org.

Special Thanks To...

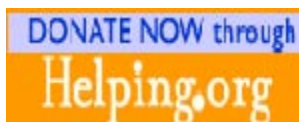
- One Call for All donors that designated funds for Salish
- Mike Moscheck at DigitalAid for his technical support
- Patrick Berkeley for his extra effort in garnering support for our event
- Goodwin Gibbons for her amazing office efforts
- Bainbridge Island Fire Department for use of their facilities
- Four Winds* Westward Ho for their ongoing support of our programs through the use of their vessel the *Carlyn*
- Loren Brown and the rest of Blue Sky Printing for exceptional advice and extra efforts

How to Donate

It is easy to donate to Salish! Send a check, made out to Salish Sea Expeditions, in the enclosed donation envelope.

Donate by credit card online

Go to www.salish.org/getinvolved.htm, then click on



Online donations are secure and private.

You can also donate stock!

For more information on how to do this, please contact the office and we will give you simple, detailed instructions.

And please don't forget to see if your company will match your donation!



Salish Sea Expeditions

647 Horizon View Pl. N.W.
Bainbridge Island, WA 98110

NONPROFIT ORG
U.S. POSTAGE
PAID
Silverdale, WA
PERMIT NO. 111

Address Service Requested

To update your mailing information, please contact us at lorrieke@salish.org or (206)780-7848 ext. 3#.

Inspiring a Passion for Learning ...



All hands on deck as the crew and students from North Central Educational School District join together in making the Carlyn shipshape

Fun Ocean Facts

Zooplankton are not just wanderers. Some can move up to 300 feet per day in the water column, which is equivalent to walking over 20 miles to work each day.

The Giant Squid (*Architeuthis dux*) has the largest eye in the animal kingdom, reaching up to 15 inches in diameter.

Sunlight can penetrate clear ocean water to a depth of over 150 feet.

The Bay of Fundy in Northeastern Canada has tidal ranges of over 52 feet. The tides are said to come in faster than a person can run.

Due to plate tectonics, the North Atlantic Ocean widens an average of one inch per year.

The largest sea in the world is the Bering Sea at 876,000 square miles.